



DAH

Boom-Mounted Mulchers

The DAH models range from the DAH-065B, for 5 to 8 tons excavators, to the DAH-150Er, for 27 to 35 tons excavators. They can be installed on all mast-type hydraulic carrier with sufficient hydraulic lines, weight and power. The main advantages of this model lie in visibility, versatility and mobility. With the wide ranges of carrier's choice and the mulching feats of the DAH, there is no job too hard for a well-equipped land clearing or right-of-way maintenance business.



Pipeline and transmission line maintenance



Highways, roads and trails maintenance



Firebreak creation and forest management



Private property maintenance and land clearing

DENIS CIMA

211 rue Notre-Dame
Roxton Falls QC J0H 1E0
Canada

www.deniscimaf.com

Toll free : 877-279-2300
Phone : 450-548-7007
Fax: 450-548-7008

info@deniscimaf.com



Rings
Protective rings that limit the size of the bites and considerably reduce risks of breakage on the knife holders.



Motor
Variable displacement, axial-piston motors that minimize overheating and improve re-acceleration.



Drive
Industrial cogged belt drive system that prevents slippage and reduces effort applied to bearings compared with V-belts, for longer bearing life.



Knives
Heat-treated, bolt-on forged knives that deliver maximum resistance to impact and abrasion, and that can be sharpened right on the unit.



Easy replacement
Easy-to-replace knives: A single nut and bolt hold the knife in place. Replacing worn knives is a snap.



New tilt option offers higher productivity owing to increased aggressiveness.

SPECIFICATIONS	DAH-150Er	DAH-150E	DAH-125D	DAH-100C	DAH-085B	DAH-065B
Min. Excavator Size [t (lbs)]	27 (59 000)	20 (44 000)	16 (35 000)	10 (22 000)	8 (18 000)	5 (11 000)
Recommended Minimum Carrier Power [kW (hp)]	140 (190)	96 (130)	59 (80)	48 (65)	40 (54)	38 (50)
Cutting Width [cm (in)]	145 (57)	145 (57)	121 (48)	108 (42)	87 (34)	65 (26)
Cutting Distance from Ground Level [cm (in)]	2.7 (1.07)	2.7 (1.07)	2.6 (1)	2 (0.75)	2 (0.75)	2 (0.75)
Number of Blades on Rotor	21	21	17	15	15	11
Optimal Target Material Diameter [cm (in)]	50 (20)	40 (15)	25 (10)	15 (6)	10 (4)	≤10 (4)
Exterior Length [cm (in)]	197 (78)	197 (78)	165 (65)	142 (56)	117 (46)	100 (39)
Exterior Height [cm (in)]	109 (43)	104 (41)	96 (38)	85 (33)	76 (30)	73 (29)
Exterior Width [cm (in)]	81 (32)	81 (32)	74 (29)	71 (28)	61 (24)	61 (24)
Rotor Diameter [cm (in)]	51 (20)	51 (20)	46 (18)	43 (17)	35 (14)	35 (14)
Approximate Typical Weight [kg (lbs)]	1680 (3700)	1550 (3400)	1000 (2220)	680 (1500)	500 (1100)	410 (900)
HYDRAULIC SYSTEM	DAH-150Er	DAH-150E	DAH-125D	DAH-100C	DAH-085B	DAH-065B
Variable Displacement Axial Piston Motor [cc]	170	115	115	85	60	28
Min. Required Continuous Flow [L/min (gal/min)]	205 (54)	136 (36)	121 (32)	102 (27)	95 (25)	53 (14)
Min. Operating Pressure [bar (psi)]	350 (5000)	350 (5000)	350 (5000)	350 (5000)	275 (4000)	275 (4000)
Rotating Speed [rpm]	3000	3000	3000	3000	4000	4000
Pressure Line I.D. [# (in)]	#20 (1.25)	#16 (1.00)	#16 (1.00)	#12 (0.75)	#12 (0.75)	#12 (0.75)
Return Line I.D. [# (in)]	#20 (1.25)	#16 (1.00)	#16 (1.00)	#12 (0.75)	#12 (0.75)	#12 (0.75)
Drain Line I.D. [# (in)]	#12 (0.75)	#12 (0.75)	#12 (0.75)	#8 (0.5)	#8 (0.5)	#8 (0.5)
FEATURES	DAH-150Er	DAH-150E	DAH-125D	DAH-100C	DAH-085B	DAH-065B
Type of Sharpenable Bolt-on Forged Blades	REGULAR	REGULAR	REGULAR	REGULAR	V-Back	V-Back
Tilt System	Optional	Optional	Optional	Optional	Optional	Unavailable
Bolt-on Wear Liner	Included	Included	Included	Included	Unavailable	Unavailable
Approximate Weight (All Options) [kg (lbs)]	2100 (4700)	1960 (4300)	1360 (3000)	910 (2000)	640 (1400)	545 (1200)

These are minimum requirements; call your DENIS CIMAF's sale representative for guidance in selecting the best match. This information is subject to change without notice.

Standard Blades



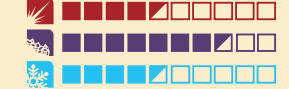
I S1 Blades (Basic)
Part number: F0010-02



High-quality, high carbon alloy steel. Good general application.



II S2 Blades (Carbide Layer)
Part number: F0010-02-RL1



High-quality, high carbon alloy steel with laser applied tungsten carbide layer. Good general application especially in abrasive soils.



III S3 Blades (Impact resistance)
Part number: F0010-03-2



High impact and shock resistant tool hardened using various heat treatments. Use where risk of impact is higher.



IV S4 Blades (Jack of all trades)
Part number: F0010-03



High impact and shock resistant tool hardened using various heat and chemical treatments. Best all-around tool



V S5 Blades (Abrasion Resistance)
Part number: F0010-03-3T



High impact and shock resistant tool, hardened with a special triple treatment.

Standard Hammers



VI C1 and C2 Hammers (Spike/Flat)
Part number: FC1046C or FC1049M



High-quality, high carbon alloy steel with welded carbide hammer heads. Best used if the head is often exposed to rock or soil.

B-type Blades



I B1 Blades (V-back)
Part number: F0012-02



High-quality, high carbon alloy steel. Good general application. The V-back shape helps with impact resistance.



Headquarters

DENIS CIMAF inc.
211 rue Notre-Dame,
Roxton Falls, QC, Canada,
J0H 1E0

TOLL FREE 1-877-279-2300 **PHONE** 1-450-548-7007

EMAIL info@deniscimaf.com **FAX** 1-450-548-7008

www.deniscimaf.com

DENIS CIMAF ONLINE
Subscribe to our online services to track the machines in your fleet, request assistance, get manuals, parts number list and many more upcoming.
Join the DENIS CIMAF family!



DENIS  **CIMAF**